



Hard Chess Puzzle # 0121

By

G Bud Games
<https://gbud.in>

January 30, 2022

Contents

Hard Chess puzzle # 0121 - Mate in 3 moves	3
Hard chess puzzle 0121	3
Solution to hard chess puzzle 0121	4
Solution 1	4
Right moves for the solution to the hard chess puzzle 0121	7
Explanation for the moves	7
Categories of hard chess puzzle 0121	8
hard chess puzzle 0121 chart	8
How to view the solution to hard chess puzzle 0121	10
How to get help for moves in the hard chess puzzle 0121	11
Play chess for free	12

List of Figures

1	Solve this hard chess puzzle 0121. Mate in 3 moves @ https://gbud.in/gh6rx73	3
2	Solve this hard chess puzzle online with solution @ https://gbud.in/gh6rx73	3
3	Initial board position of hard chess puzzle 0121	4
4	Qb8+	5
5	Ke7	5
6	Qe8+	6
7	Kf6	6
8	Bg5#	7
9	hard chess puzzle 121 chart 1	8
10	hard chess puzzle 121 chart 2	9
11	hard chess puzzle 121 chart 3	9
12	hard chess puzzle 121 chart 4	10
13	Click the solution button to view solutions @ https://gbud.in/gh6rx73	10
14	Click the help button to get help on next move @ https://gbud.in/gh6rx73	11
15	Solve more hard puzzles @ https://gbud.in/chshdpz	11
16	Solve other puzzles @ https://gbud.in/chsgppz	11
17	Play chess online for free. Solve puzzles and play with friends	12
18	Solve this puzzle online by scanning this QR code or go to the link below	13

Hard Chess puzzle # 0121 - Mate in 3 moves

Solve this hard chess puzzle and improve your chess games through improvement of your chess strategies and chess tactics. This hard puzzle is a subset of [kids games](#).

Puzzle No : 0121

Difficulty level : hard

Description : Mate in 3 moves

Next Move : White

Player level : Advanced

Short URL for puzzle : <https://gbud.in/gh6rx73>

Hard chess puzzle 0121

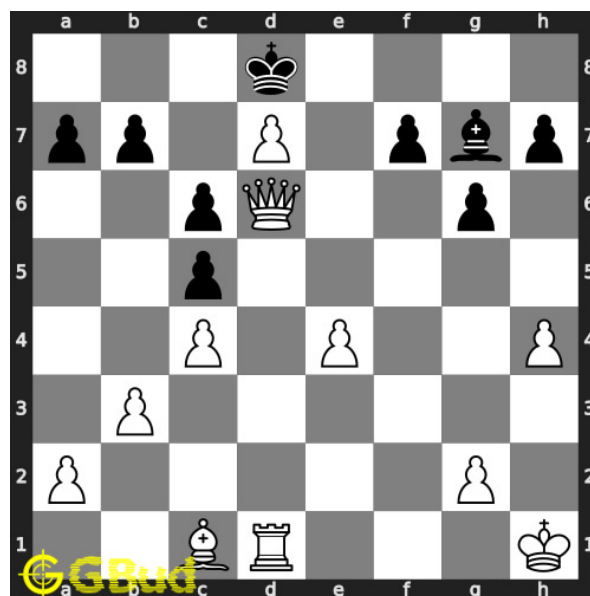


Figure 1: Solve this hard chess puzzle 0121. Mate in 3 moves @ <https://gbud.in/gh6rx73>



Figure 2: Solve this hard chess puzzle online with solution @ <https://gbud.in/gh6rx73>

Dont forget to check out [chess puzzles](#), [easy chess puzzles](#), [medium chess puzzles](#), [hard chess puzzles](#) and [chess puzzles collections](#) .

Solution to hard chess puzzle 0121

At this puzzle, next [move](#) is by [White](#). The objective of the puzzle is to mate in 3 moves.

See the interactive solution at the [puzzle page](#)

Solution 1

Initial board position This is the initial board position of hard chess puzzle 0121.

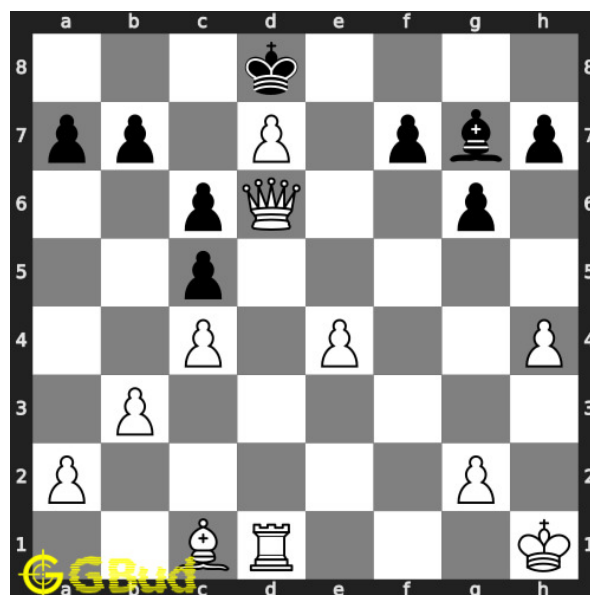


Figure 3: Initial board position of hard chess puzzle 0121

Move 1 Move by white

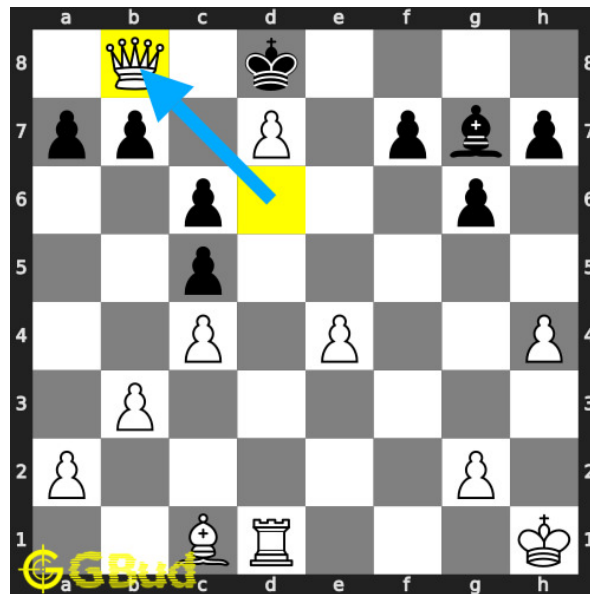


Figure 4: Qb8+

your **queen moves** to **b8** and gives **check** to opponent. this is to drive the opponent's **king** to seventh **rank**.

Move 2 Move by black

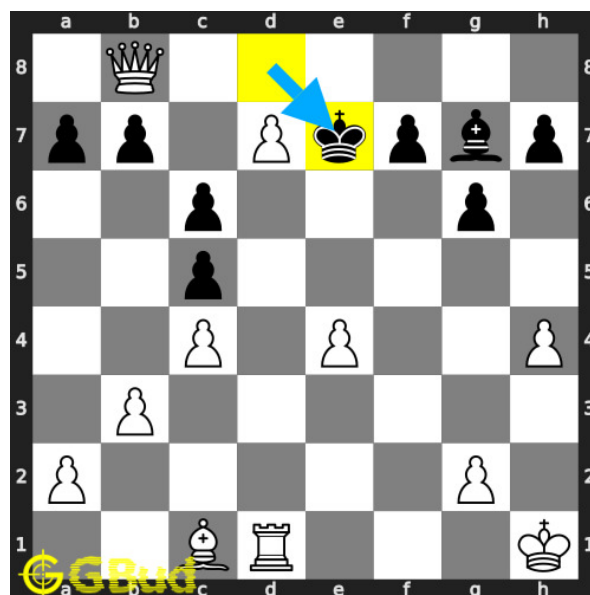


Figure 5: Ke7

opponent's **king moves** to **e7** as this is the only legal **move** available.

Move 3 Move by white

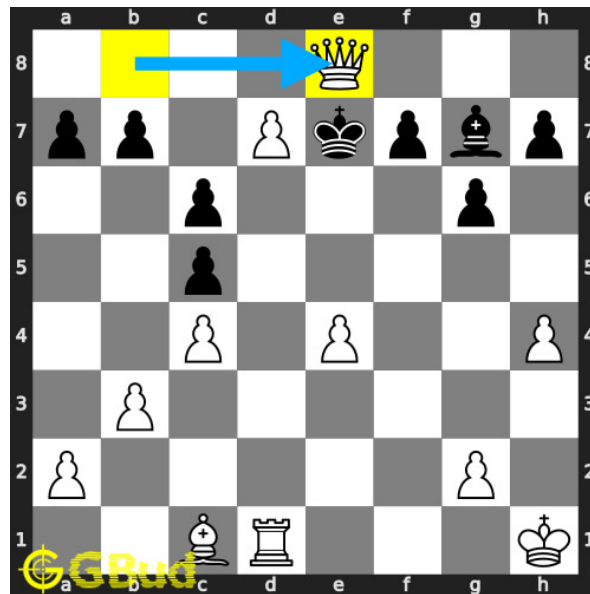


Figure 6: Qe8+

your **queen** gives next **check** .

Move 4 Move by black

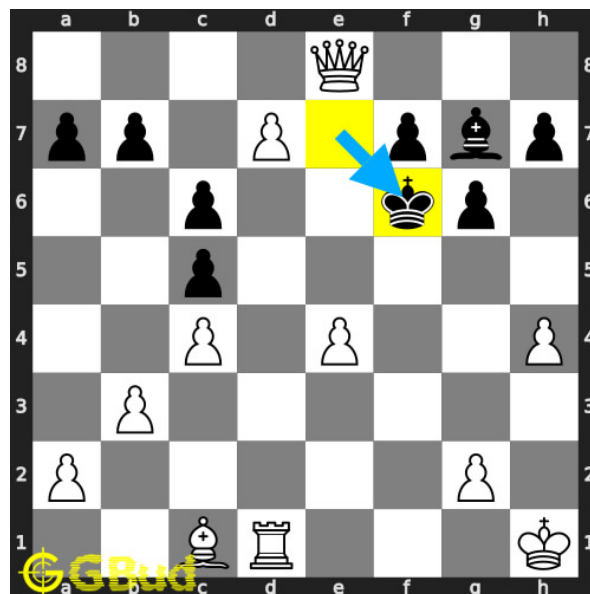


Figure 7: Kf6

king can't **capture** your **queen** since it is supported by the **pawn**. the **king** moves to f6.

Move 5 Move by white

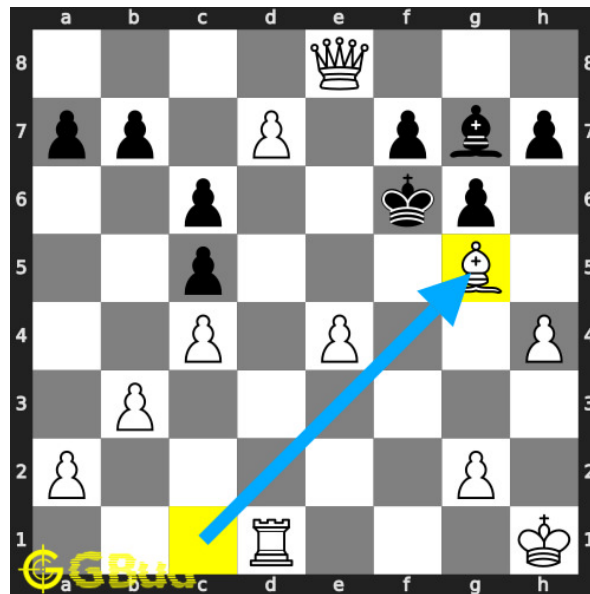


Figure 8: Bg5#

your **bishop** moves to **g5** and **checkmate**. opponent's **king** can't **capture** your **bishop** since it is supported by **pawn**. this is how you can **mate** in 3 moves.

Right moves for the solution to the hard chess puzzle 0121

Based on the objective of the puzzle, you have to make the right moves. Following are the right moves

1. Qb8+, Qe8+, Bg5#

Explanation for the moves

1. Qb8+ - Your queen moves to b8 and gives check to opponent. This is to drive the opponent's king to seventh rank.
2. Ke7 - Opponent's king moves to e7 as this is the only legal move available.
3. Qe8+ - Your queen gives next check .
4. Kf6 - King can't capture your queen since it is supported by the pawn. The king moves to f6.
5. Bg5# - Your bishop moves to g5 and checkmate. Opponent's king can't capture your bishop since it is supported by pawn. This is how you can mate in 3 moves.
6. For right move - You have moved your queen and bishop effectively to win the game. Good moves

7. For wrong move - It seems you failed to use the queen and bishop correctly for a checkmate. Try again.

Categories of hard chess puzzle 0121

This hard chess puzzle falls in these categories.

1. [Hard chess puzzles](#)
2. [Mate in 3 puzzles in chess](#)
3. [Endgame puzzles in chess](#)
4. [Strategy puzzles in chess](#)
5. [Queen puzzles in chess](#)
6. [Bishop puzzles in chess](#)

hard chess puzzle 0121 chart



Figure 9: hard chess puzzle 121 chart 1



Figure 10: hard chess puzzle 121 chart 2



Figure 11: hard chess puzzle 121 chart 3

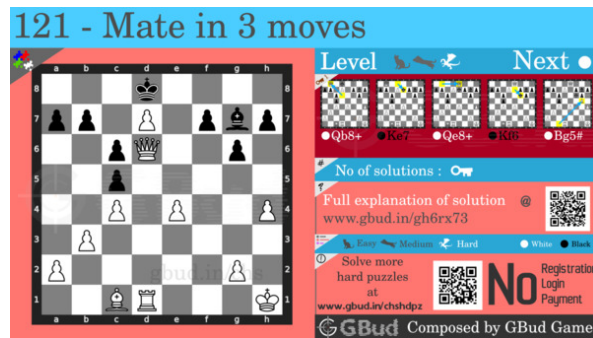


Figure 12: hard chess puzzle 121 chart 4

How to view the solution to hard chess puzzle 0121

To view the [solution to this puzzle](https://gbud.in/blog/game/chess/hard-chess-puzzles/hard-chess-puzzle-0121.html), follow the steps given below

1. Go to the [puzzle page](https://gbud.in/blog/game/chess/hard-chess-puzzles/hard-chess-puzzle-0121.html)
2. Click the solution button (Key as shown [below](#)) to view the solution



Figure 13: Click the solution button to view solutions @ <https://gbud.in/gh6rx73>

How to get help for moves in the hard chess puzzle 0121

To get help or the possible next moves in the puzzle, , follow the steps given below

1. Go to the [puzzle page](#)
2. Click the help button (exclamation mark as shown [below](#)) to get help or suggestion on next possible [move](#)



Figure 14: Click the help button to get help on next move @ <https://gbud.in/gh6rx73>



Figure 15: Solve more hard puzzles @ <https://gbud.in/chshdpz>



Figure 16: Solve other puzzles @ <https://gbud.in/chsgppz>

Play chess for free

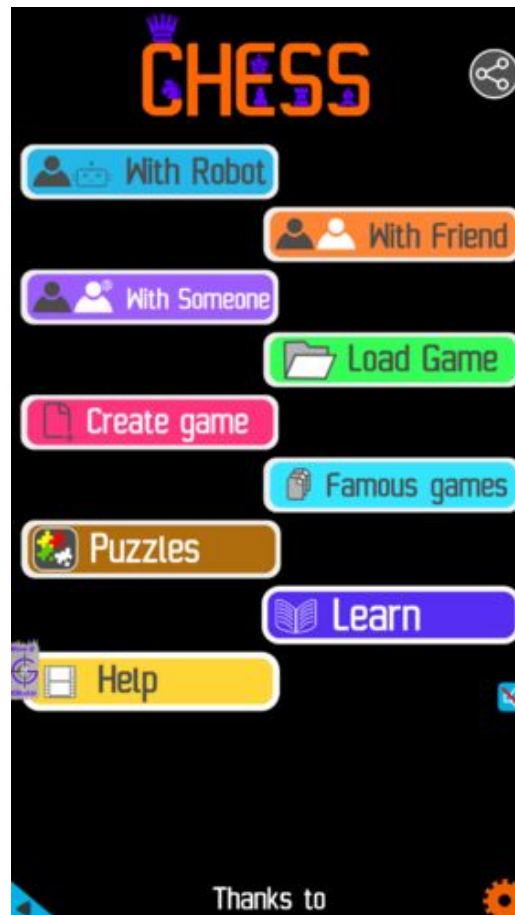


Figure 17: Play chess online for free. Solve puzzles and play with friends

Play chess for free at <https://gbud.in/chs>

We present you a platform to play chess online with friends for free. No need to install any app. You can play chess for free without registration or login.

Simple. You can do several chess related activities.

1. [solve chess puzzles](#)
2. [learn about chess](#)
3. [play chess with computer](#)
4. [play chess with friend](#)
5. [create your own chess games](#)

6. [fen viewer](#)
7. [fen editor](#)
8. [fen generator](#)
9. [pgn viewer](#)
10. [chess board editor](#)
11. [view famous chess games.](#)



Figure 18: Solve this puzzle online by scanning this QR code or go to the link below

<https://gbud.in/gh6rx73>

Read the latest article on Hard Chess puzzle # 0121 - Mate in 3 moves by scanning this QR code or click the link

Previous article : « [Hard Chess puzzle # 0120 - Mate in 4 moves](#)

Next article : [Hard Chess puzzle # 0122 - Mate in 3 moves](#) »

[Back to top](#)

[Contact Us](#)